

THE EMPTY CIRCLE



Adolfo Doring

Coyote, Los Angeles (361-154); Patricija, New York City (383-243) Posted 162 Grams, 2016

Unique silver gelatin diptych print mounted on archival museum board and framed in wood

4 x 8 inches

9 x 12.75 inches framed

THE EMPTY CIRCLE



Adolfo Doring

Garage, Los Angeles (348-131), Sylvia Elizabeth, Brooklyn (356-190), Posted 162 Grams, 2016

Unique silver gelatin diptych print mounted on archival museum board and framed in wood

4 x 8 inches

9 x 12.75 inches framed

THE EMPTY CIRCLE



Adolfo Doring

Bus Passenger, New York City (328-108); Sofia, Brooklyn (390-153) Posted 162 Grams, 2016

Unique silver gelatin diptych print mounted on archival museum board and framed in wood

4 x 8 inches

9 x 12.75 inches framed

THE EMPTY CIRCLE



Adolfo Doring

Allison, Brooklyn; Snowman (331-137), Brooklyn (279-098) Posted 162 Grams, 2016

Unique silver gelatin diptych print mounted on archival museum board and framed in wood

4 x 8 inches

9 x 12.75 inches framed

THE EMPTY CIRCLE



Adolfo Doring

Anne Claire, Nantes France (391-101); Nettie Harris, Brooklyn (406-145) Posted 162 Grams, 2016
Unique silver gelatin diptych print mounted on archival museum board and framed in wood

THE EMPTY CIRCLE



Adolfo Doring

Jessy, Cholula, Mexico (240-100): Isabel, Mexico City (219-143) Posted 162 Grams, 2016

Unique silver gelatin diptych print mounted on archival museum board and framed in wood

4 x 8 inches

9 x 12.75 inches framed

THE EMPTY CIRCLE



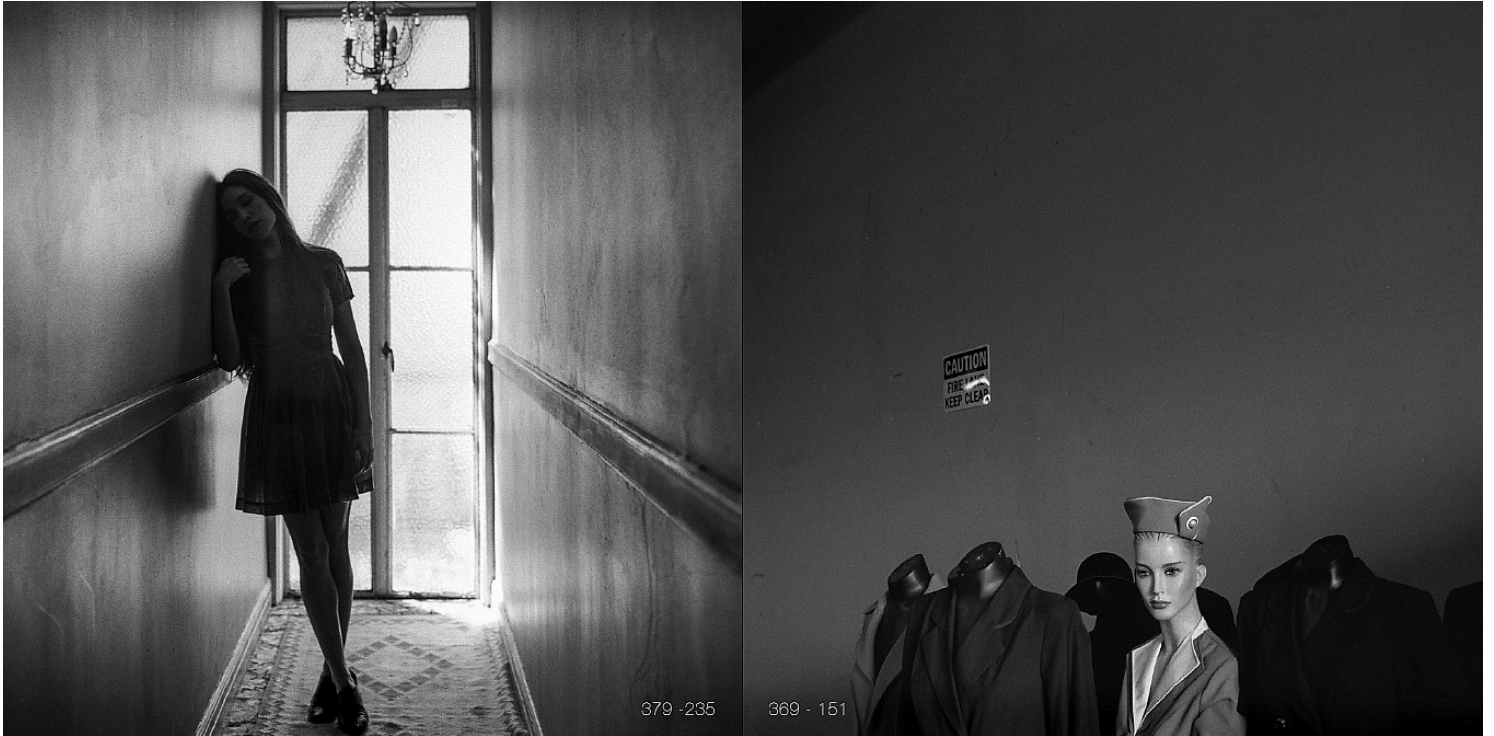
Adolfo Doring

Wheat, Miami; Patricija (188-084), New York City (168-125) Posted 162 Grams, 2016
Unique silver gelatin diptych print, mounted on archival museum board and framed in wood

4 x 8 inches

9 x 12.75 inches framed

THE EMPTY CIRCLE



Adolfo Doring

Ana Corbi, Los Angeles (379-235); Film Studio, Los Angeles (369-151) Posted 162 Grams, 2016

Unique silver gelatin diptych print mounted on archival museum board and framed in wood

4 x 8 inches

9 x 12.75 inches framed

THE EMPTY CIRCLE



Adolfo Doring

Julie, Paris; Mona Lisa (345-215), The Louve, Paris (373-136) Posted 162 Grams, 2016

Unique silver gelatin diptych print mounted on archival museum board and framed in wood

4 x 8 inches

9 x 12.75 inches framed

THE EMPTY CIRCLE



Adolfo Doring

Café Flore, Paris; Allison (352-114), Brooklyn (307-164) Posted 162 Grams, 2016

Unique silver gelatin diptych print mounted on archival museum board and framed in wood

4 x 8 inches

9 x 12.75 inches framed

THE EMPTY CIRCLE



Adolfo Doring

Volkswagon, London (281-143); Ana Corbi, Los Angeles (366-229) Posted 162 Grams, 2016

Unique silver gelatin diptych print mounted on archival museum board and framed in wood

4 x 8 inches

9 x 12.75 inches framed

THE EMPTY CIRCLE



Adolfo Doring

Anastasia, Chelsea Hotel (235-211), New York City; 34th Street, New York City (388-136) Posted 162 Grams, 2016

Unique silver gelatin diptych print mounted on archival museum board and framed in wood

4 x 8 inches

9 x 12.75 inches framed

THE EMPTY CIRCLE



Adolfo Doring

Farmacia, San Jose, Costa Rica; Ana Tatton, London (125-179) Posted 162 Grams, 2016
Unique silver gelatin diptych print mounted on archival museum board and framed in wood

4 x 8 inches

9 x 12.75 inches framed

THE EMPTY CIRCLE



Adolfo Doring

Door, Greenport, Long Island (341-118); Andrea Margaret, Brooklyn (407-170) Posted 162 Grams, 2016

Unique silver gelatin diptych print mounted on archival museum board and framed in wood

4 x 8 inches

9 x 12.75 inches framed

THE EMPTY CIRCLE



Adolfo Doring

Hole, Wall Street, New York (350-115); Sofija, New York City (212-164) Posted 162 Grams, 2016

Unique silver gelatin diptych print mounted on archival museum board and framed in wood

4 x 8 inches

9 x 12.75 inches framed

THE EMPTY CIRCLE



Adolfo Doring

Nadia, Brooklyn (225-161); Tree, Nantes, France (405-110) Posted 162 Grams, 2016
Unique silver gelatin diptych print mounted on archival museum board and framed in wood
4 x 8 in

THE EMPTY CIRCLE



Adolfo Doring

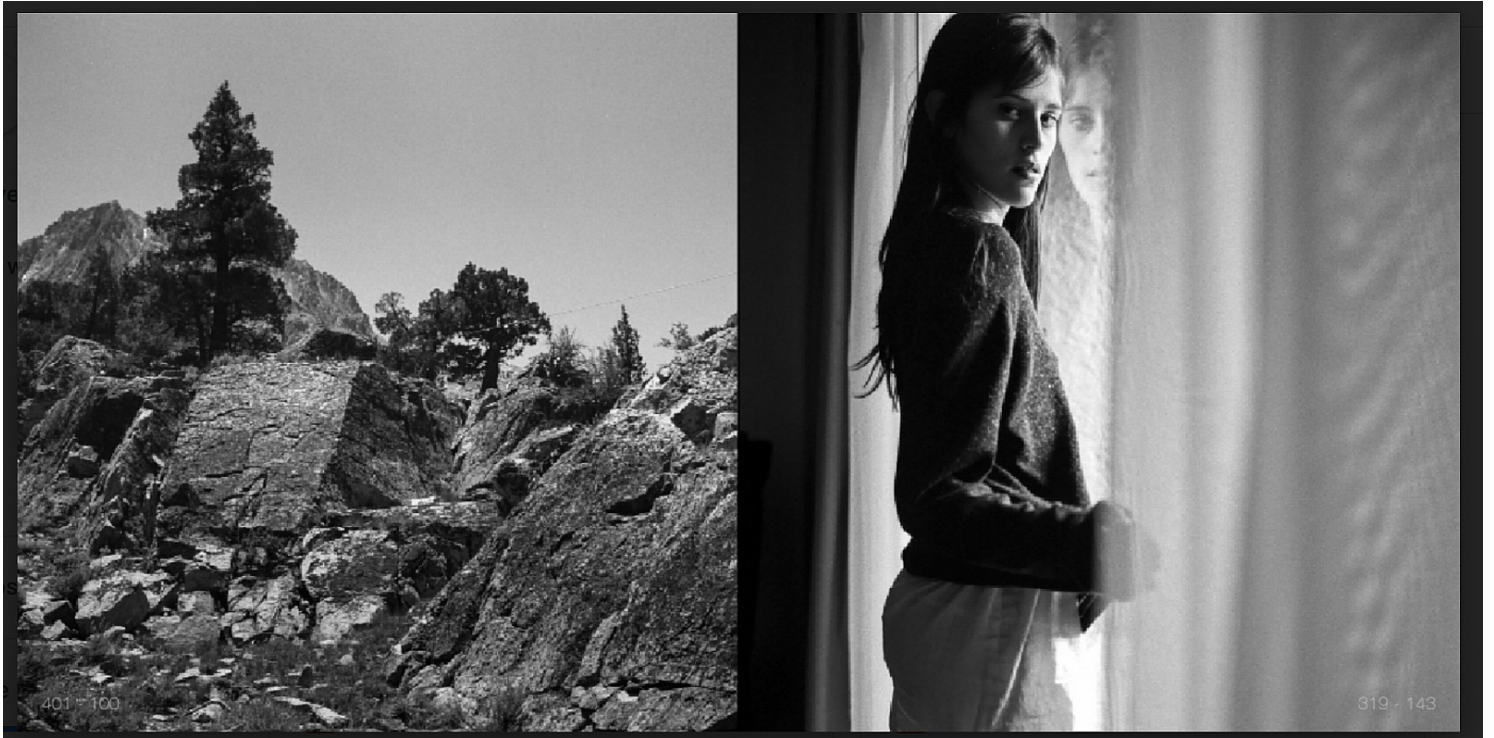
Sylvia Elizabeth, New York City (399-150); El Angel, Mexico city (395-104) Posted 162 Grams, 2016

Unique silver gelatin diptych print mounted on archival museum board and framed in wood

4 x 8 inches

9 x 12.75 inches framed

THE EMPTY CIRCLE



Adolfo Doring

Mammoth, California (401-100); Isabel, Mexico City (319-143) Posted 162 Grams, 2016

Unique silver gelatin diptych print mounted on archival museum board and framed in wood

4 x 8 inches

9 x 12.75 inches framed

THE EMPTY CIRCLE



Adolfo Doring

Dog In Car, New York City (181-099); Anastasia, Brooklyn (262-142) Posted 162 Grams, 2016

Unique silver gelatin diptych print mounted on archival museum board and framed in wood

4 x 8 inches

9 x 12.75 inches framed

THE EMPTY CIRCLE



Adolfo Doring

Disneyland, Orlando (259-093); Christina, Ann Arbor (285-132) Posted 162 Grams, 2016

Unique silver gelatin diptych print mounted on archival museum board and framed in wood

4 x 8 inches

9 x 12.75 inches framed